

softlite™ II 1x4



features

1'x4' low profile recessed indirect with center basket below the ceiling.

High reflectance, low gloss Matte White finish controls glare and provides high efficiency.

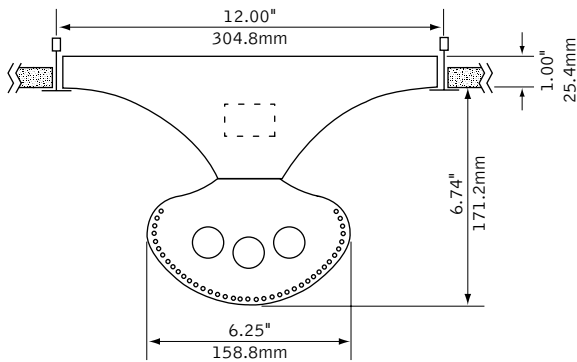
Softlite™ II extends only 1" above ceiling making it a great solution for low plenum applications.

Two-piece endcaps provide row-mount capability for all Softlite™ II configurations.

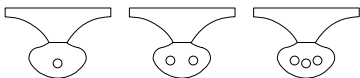
Diffuser assembly is retained by self-aligning torsion springs and pulls down for easy relamping.

Softlite™ II provides high angle uniform distribution ideal for general illumination.

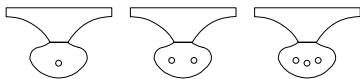
dimensional data



lamping options



T8 LAMPS



T5/T5HO LAMPS

shielding options & details

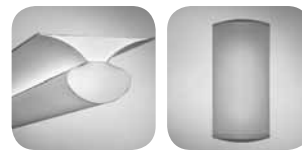


perforated

radial blade louver

continuous row mount

companion luminaire

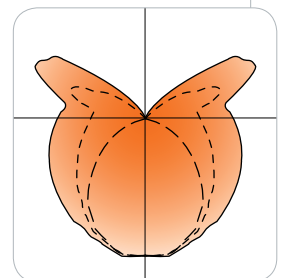


linear

sconce

performance

2-Lamp T8
79% Efficiency
842 cd @ 5°



Visit focalpointlights.com for complete photometric data.

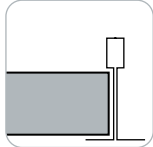
fixture:

project:

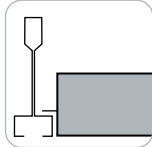
mounting information

grid

specify "G" for flat 9/16" and 15/16" tee or "ST" for 9/16" slot tee grid types.



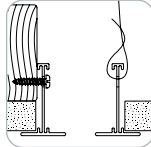
"G" flat tee



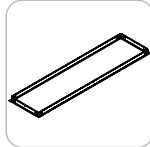
"ST" slot tee

drywall frame kit

specify "DF" Drywall Frame Kit for drywall ceiling conditions.



Use tie-wire or screws to secure frame kit.



cut out dimensions:
1': Min: 12.25"
Max: 12.563"
4': Min: 48.25"
Max: 48.563"

specifications

construction

One-piece 20 Ga. steel reflector and housing.
Die-cast aluminum end caps support perforated lamp shield.
Optional radial blade louver: .75"H x 1" frequency fabricated of 20 Ga. steel with acrylic lens insert.
Bottom and top access 20 Ga. steel ballast compartment.

weight: 19 lbs

optic

20 Ga. steel reflector finished in Matte Satin White powder coat.
Lamps are shielded by detachable 22 Ga. steel perforated lamp shield with acrylic lens insert.

electrical

Electronic ballasts are thermally protected and have a Class "P" rating.
Optional dimming ballasts available.
Consult factory for dimming specifications and availability.
UL and cUL listed.

finish

Polyester powder coat applied over a 5-stage pre-treatment.

ordering

| | | |
|--|------|------------|
| luminaire series | | <u>FS2</u> |
| Softlite II | FS2 | |
| nominal size | | <u>14</u> |
| 1' x 4' | 14 | |
| distribution | | <u>B</u> |
| Bi-Directional | B | |
| lamp quantity | | |
| One Lamp | 1 | |
| Two Lamps | 2 | |
| Three Lamps | 3 | |
| lamp type | | |
| T8 | T8 | |
| T5 | T5 | |
| T5H0 | T5H0 | |
| ballast | | |
| Electronic Instant Start <20% THD (T8 only) | E | |
| Electronic Program Start <10% THD | S | |
| Electronic Dimming Ballast* | D | |
| voltage | | |
| 120 Volt | 120 | |
| 277 Volt | 277 | |
| 347 Volt | 347 | |
| mounting | | |
| Grid | G | |
| Slot Tee | ST | |
| shielding | | |
| Perforated Shield | PS | |
| Radial Blade Louver | RLP | |
| factory options | | |
| Chicago Plenum | CP | |
| Drywall Frame Kit (Cut out dimensions: Min: 12.25"/Max: 12.563" Min: 48.25"/Max 48.563") | DF | |
| Emergency Battery Pack* | EM | |
| Earthquake Clips | EQ | |
| HLR/GLR Fuse | FU | |
| Flex Whip* | FW | |
| Include 3000K Lamp* | L830 | |
| Include 3500K Lamp* | L835 | |
| Include 4100K Lamp* | L841 | |
| Separate Circuit* | SC | |
| Separate Circuit Tandem* | SCT | |
| Labor Saving Master Satellite* | LS | |
| Ballast Saving Tandem* | BST | |
| Lutron™ Sensor Feed* (EcoSystem ballast required) | SF | |
| finish | | <u>WH</u> |
| Matte Satin White | WH | |

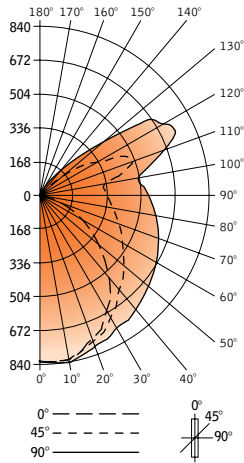
* for more information see Reference section.

softlite™ II 1x4



Filename: FS2142T8PS.IES
 Catalog #: FS2-14-B-2-T8-E-120-G-PS-WH/
 Efficiency: 79%
 Test #: 12000.0

CANDLEPOWER DISTRIBUTION



Spacing 1.2
 Criterion: 1.4

| Vertical Angle | Horizontal Angle | | | | Zonal Lumens |
|----------------|------------------|-------|-----|-------|--------------|
| | 0° | 22.5° | 45° | 67.5° | |
| 0° | 833 | 833 | 833 | 833 | 833 |
| 5° | 841 | 841 | 844 | 842 | 842 |
| 15° | 814 | 815 | 825 | 830 | 833 |
| 25° | 740 | 746 | 766 | 784 | 794 |
| 35° | 630 | 642 | 678 | 736 | 766 |
| 45° | 479 | 498 | 586 | 681 | 722 |
| 55° | 332 | 370 | 520 | 645 | 697 |
| 65° | 185 | 269 | 453 | 600 | 660 |
| 75° | 86 | 192 | 402 | 554 | 614 |
| 85° | 21 | 153 | 352 | 502 | 562 |
| 90° | 3 | 151 | 340 | 484 | 541 |
| 95° | 13 | 140 | 321 | 463 | 520 |
| 105° | 30 | 218 | 436 | 505 | 536 |
| 115° | 27 | 65 | 476 | 691 | 761 |
| 125° | 16 | 34 | 269 | 520 | 673 |
| 135° | 0 | 24 | 70 | 214 | 278 |
| 145° | 0 | 0 | 16 | 22 | 39 |
| 155° | 0 | 0 | 0 | 0 | 0 |
| 165° | 0 | 0 | 0 | 0 | 0 |
| 175° | 0 | 0 | 0 | 0 | 0 |
| 180° | 0 | 0 | 0 | 0 | 0 |

LUMEN SUMMARY

| Zone | Lumens | % Lamp | % Fixt |
|------------------------|----------------|--------|--------|
| 0°-30° | 668 | 11.3 | 14.3 |
| 0°-40° | 2018 | 34.2 | 43.2 |
| 0°-60° | 3202 | 54.3 | 68.6 |
| 0°-90° | 1467 | 24.9 | 31.4 |
| Total Luminaire | 0°-180° | | |

LUMINANCE DATA (CD/M²)

| Vertical Angle | 0° | 45° | 90° |
|----------------|------|------|------|
| 45° | 1887 | 1466 | 1806 |
| 55° | 1612 | 1387 | 1859 |
| 65° | 1219 | 1338 | 1949 |
| 75° | 925 | 1376 | 2102 |
| 85° | 671 | 1487 | 2374 |

CO-EFFICIENTS OF UTILIZATION

| Floor | 80 | | | 70 | | | 50 | | | 20 | | |
|---------|----|----|----|----|----|----|----|----|----|----|----|----|
| Ceiling | 70 | 50 | 30 | 10 | 70 | 50 | 30 | 10 | 50 | 30 | 10 | 00 |
| Wall | 88 | 88 | 88 | 88 | 83 | 83 | 83 | 83 | 74 | 74 | 66 | 66 |
| RCR | 0 | 88 | 88 | 88 | 88 | 83 | 83 | 83 | 74 | 74 | 66 | 66 |
| 1 | 79 | 74 | 70 | 66 | 74 | 70 | 63 | 62 | 57 | 55 | 50 | 48 |
| 2 | 71 | 64 | 58 | 53 | 66 | 60 | 50 | 53 | 45 | 47 | 41 | 41 |
| 3 | 64 | 56 | 49 | 43 | 60 | 52 | 41 | 47 | 38 | 41 | 34 | 36 |
| 4 | 59 | 49 | 42 | 36 | 55 | 46 | 35 | 41 | 32 | 36 | 29 | 32 |
| 5 | 53 | 43 | 36 | 30 | 50 | 41 | 29 | 36 | 27 | 32 | 24 | 28 |
| 6 | 49 | 38 | 31 | 26 | 46 | 36 | 25 | 32 | 23 | 29 | 21 | 25 |
| 7 | 45 | 34 | 28 | 23 | 42 | 33 | 22 | 29 | 20 | 26 | 18 | 23 |
| 8 | 42 | 31 | 24 | 20 | 39 | 29 | 19 | 26 | 17 | 23 | 16 | 21 |
| 9 | 39 | 28 | 22 | 17 | 36 | 27 | 16 | 24 | 15 | 21 | 14 | 19 |
| 10 | 36 | 26 | 19 | 15 | 34 | 24 | 15 | 22 | 13 | 19 | 12 | 17 |

Numbers indicate percentage values of